



Join Martha W. Jolicoeur
and
Louise Armour, a J.P. Morgan Wealth
Partner,
for a Special Open House!

Tuesday, December 9, 2025 | 3:30 to 5:30 p.m.

La Victoria

14775 Equestrian Way

Wellington, Florida

\$21,500,000

8 Beds and 12.5 Baths

9,554 Square Feet

7.31 Acre Lot

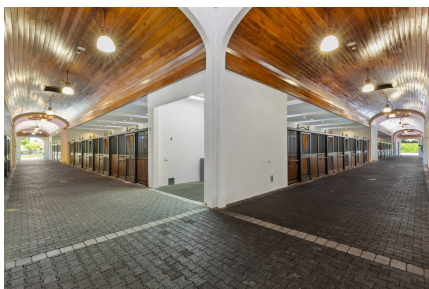


Quite possibly the most beautiful stable in Wellington, Florida. Steps from the Wellington International horse show, this custom built 28-stall center aisle barn has beautiful architecture and high-end finishes. Tastefully engineered for the most particular and knowledgeable equestrian.

Designed for privacy and ease of use, the stable features two full tack rooms, two apartments, numerous wash stalls, a large lounge with kitchen, and a spectacular owner's office with large porch overlooking the expansive all-weather arena.

There are two additional storage buildings totaling 8 garages plus another 2-bedroom apartment with porches overlooking 8 shaded and spacious paddocks. The comfortable, Spanish bungalow home on the property has a relaxing pool and spa, plus a large outdoor terrace overlooking the spectacular farm.

[View More Details](#)



Meet Louise Armour

Explore one of Wellington’s most beautiful farms while enjoying refreshments and expert insights from Louise Armour, Managing Director and Wealth Partner with J.P. Morgan Wealth Management. Louise will be sharing valuable information for property buyers including:

- Financing & Mortgage Solutions
- Home Buying Strategies
- Securities-Based Lines of Credit (SBLs)
- Pledged Mortgages

We look forward to seeing you soon!

[View Sale Properties](#)

[View Rental Properties](#)

[Palm Beach Polo Club](#)

[Contact Martha](#)